

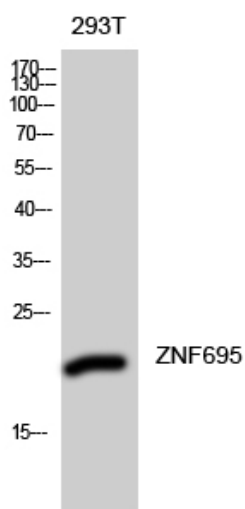


ZNF695 Polyclonal Antibody

Catalog No	YP-Ab-02201
Isotype	IgG
Reactivity	Human;Rat;Mouse;
Applications	WB;ELISA
Gene Name	ZNF695
Protein Name	Zinc finger protein 695
Immunogen	Synthesized peptide derived from the Internal region of human ZNF695.
Specificity	ZNF695 Polyclonal Antibody detects endogenous levels of ZNF695 protein.
Formulation	Liquid in PBS containing 50% glycerol, 0.5% BSA and 0.02% sodium azide.
Source	Polyclonal, Rabbit,IgG
Purification	The antibody was affinity-purified from rabbit antiserum by affinity-chromatography using epitope-specific immunogen.
Dilution	Western Blot: 1/500 - 1/2000. ELISA: 1/10000. Not yet tested in other applications.
Concentration	1 mg/ml
Purity	≥90%
Storage Stability	-20°C/1 year
Synonyms	ZNF695; Zinc finger protein 695; Zinc finger protein SBZF3
Observed Band	65-70kD or 20kd for isoform Q8IW36-1
Cell Pathway	Nucleus .
Tissue Specificity	Leiomyosarcoma,Lung carcinoma,
Function	function:May be involved in transcriptional regulation.,similarity:Contains 1 KRAB domain.,
Background	function:May be involved in transcriptional regulation.,similarity:Contains 1 KRAB domain.,
matters needing attention	Avoid repeated freezing and thawing!
Usage suggestions	This product can be used in immunological reaction related experiments. For more information, please consult technical personnel.



Products Images



Western Blot analysis of 293T cells using ZNF695 Polyclonal Antibody diluted at 1:2000. Secondary antibody(catalog#:RS0002) was diluted at 1:20000 cells nucleus extracted by Minute TM Cytoplasmic and Nuclear Fractionation kit (SC-003, Inventbiotech, MN, USA).